

Lutterberg

# Anlage 1 Übersichtskarte zur Verordnung über das Naturschutzgebiet "Bachtäler im Kaufunger Wald"



Landkreis Göttingen  
Der Landrat

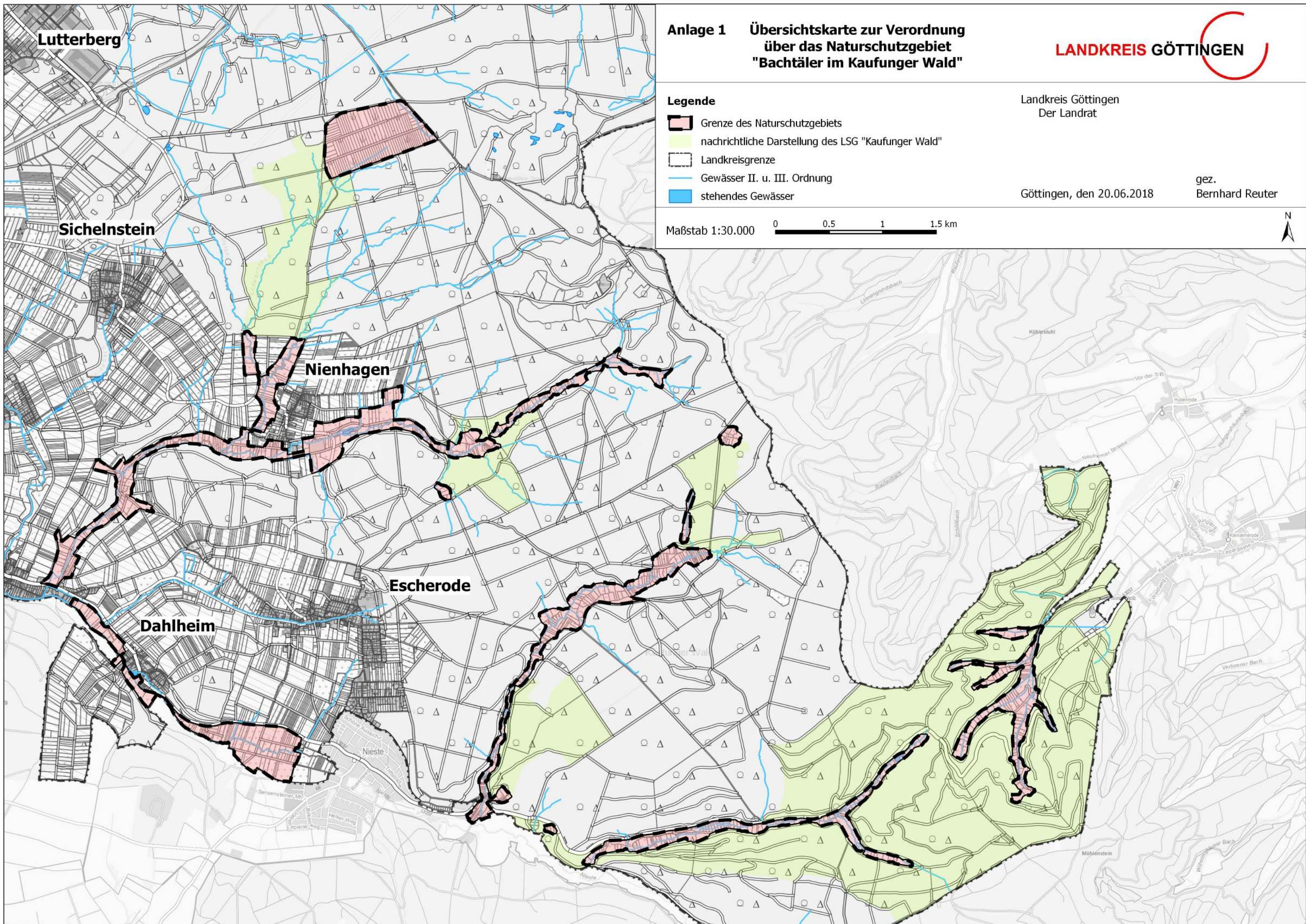
Göttingen, den 20.06.2018

gez.  
Bernhard Reuter

## Legende

- Grenze des Naturschutzgebiets
- nachrichtliche Darstellung des LSG "Kaufunger Wald"
- Landkreisgrenze
- Gewässer II. u. III. Ordnung
- stehendes Gewässer

Maßstab 1:30.000



Lutterberg

# Übersicht der Detailkarten 01 - 11 zum Naturschutzgebiet "Bachtäler im Kaufunger Wald"



Landkreis Göttingen  
Der Landrat

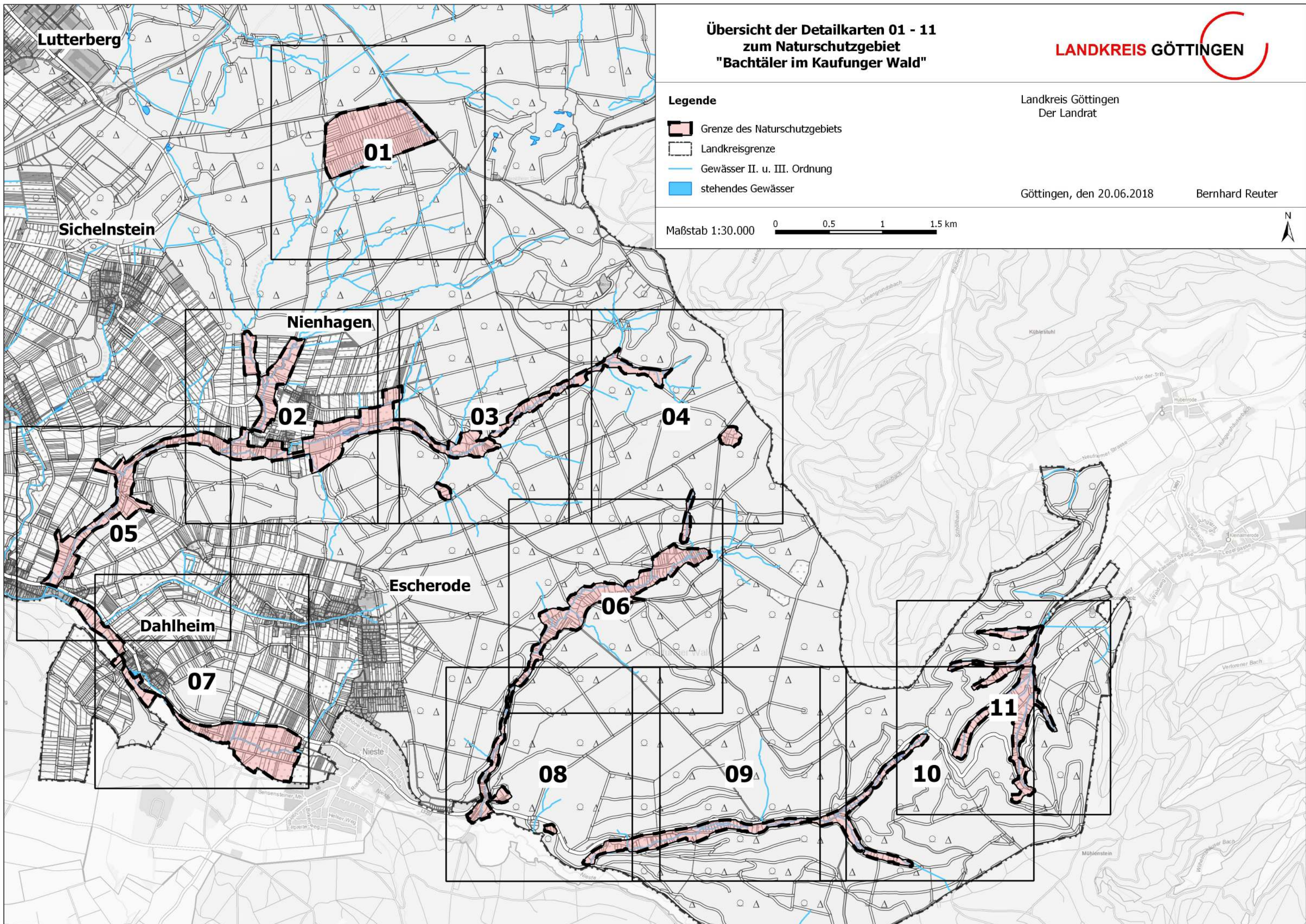
Göttingen, den 20.06.2018

Bernhard Reuter

### Legende

- Grenze des Naturschutzgebiets
- Landkreisgrenze
- Gewässer II. u. III. Ordnung
- stehendes Gewässer







Maßstab 1:30.000

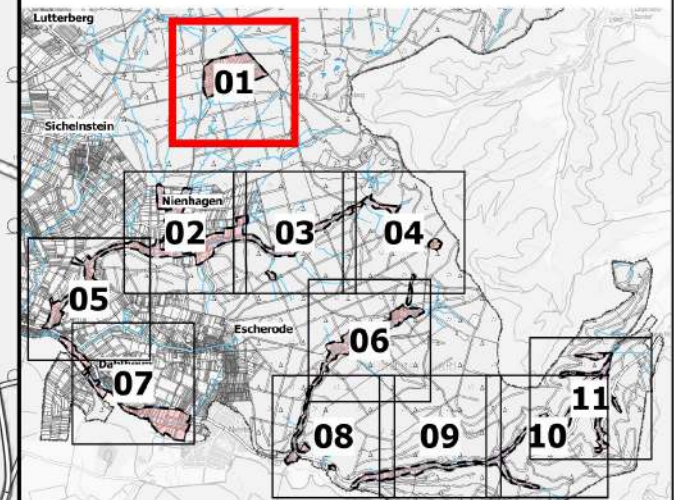
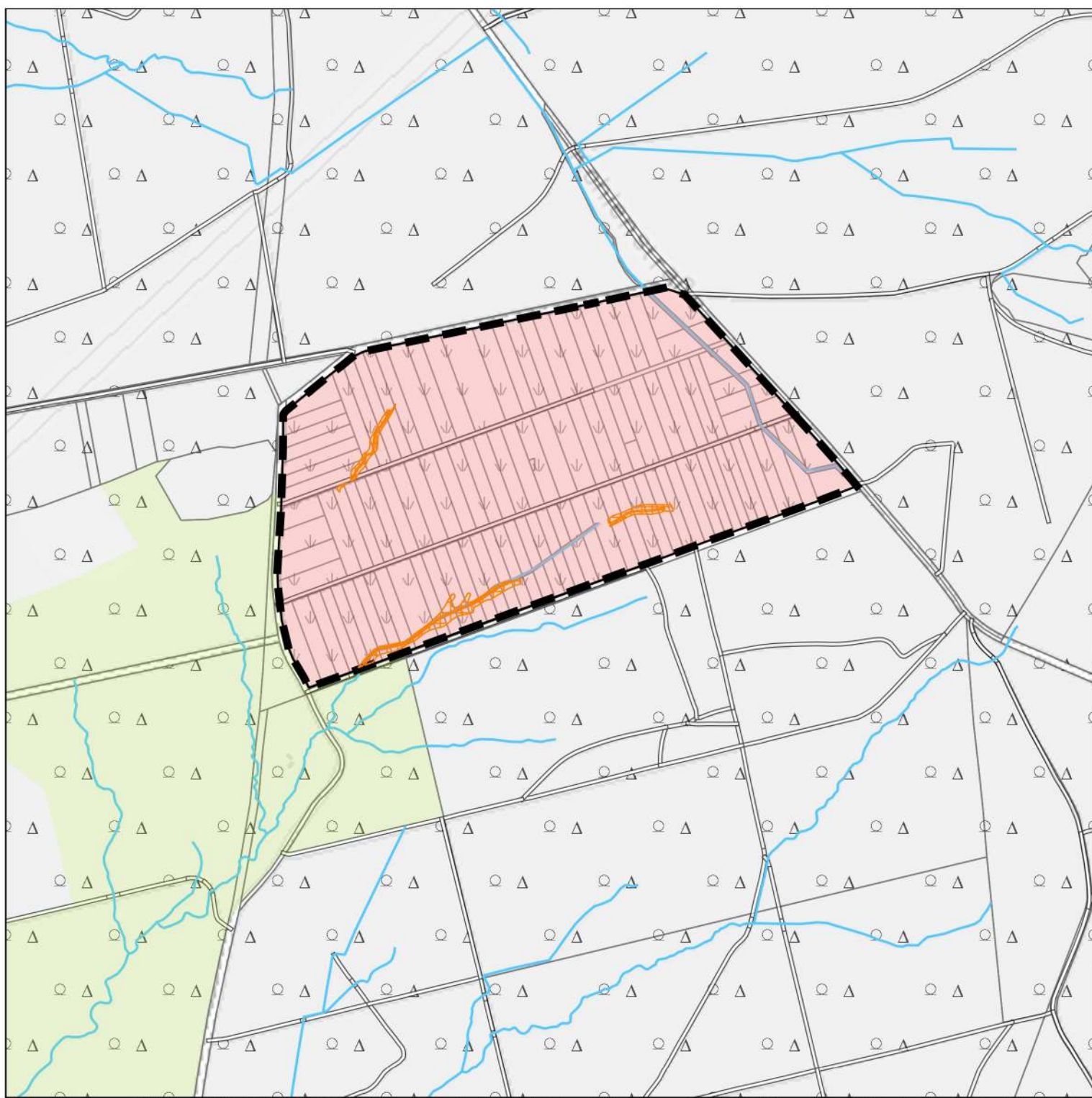


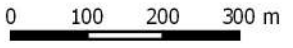

## Anlage 2

### Detailkarte 01 zur Verordnung über das NSG "Bachtäler im Kaufunger Wald"

#### Legende

-  Grenze des Naturschutzgebiets
-  nachrichtliche Darstellung des LSG "Kaufunger Wald"
-  Landkreisgrenze
-  Gewässer II. u. III. Ordnung
-  stehendes Gewässer
-  Auenwälder gemäß § 3 Abs. 3 Nr. 6

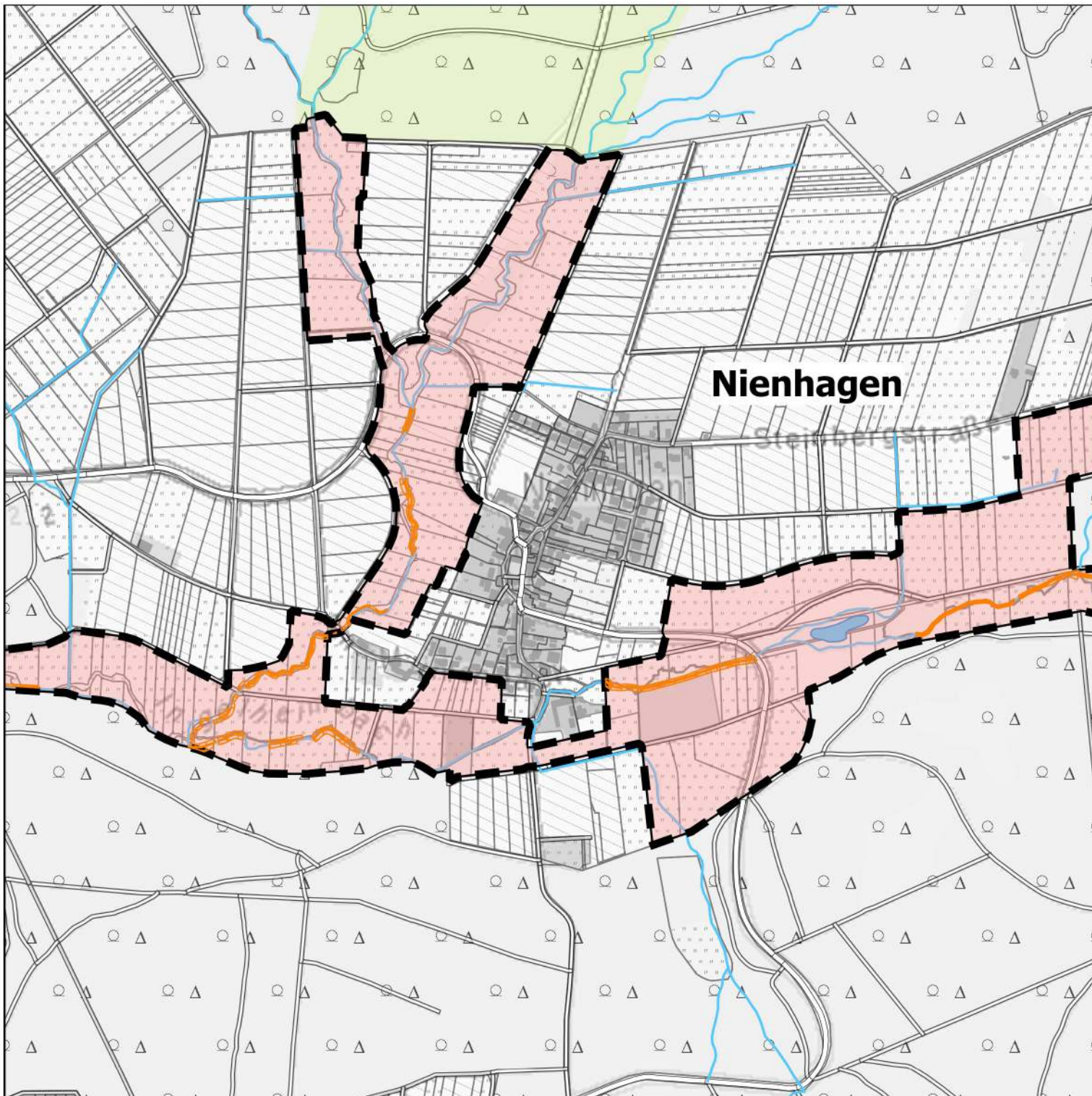


Maßstab 1:10.000  0 100 200 300 m 

Landkreis Göttingen  
Der Landrat

Göttingen, den 20.06.2018

Bernhard Reuter









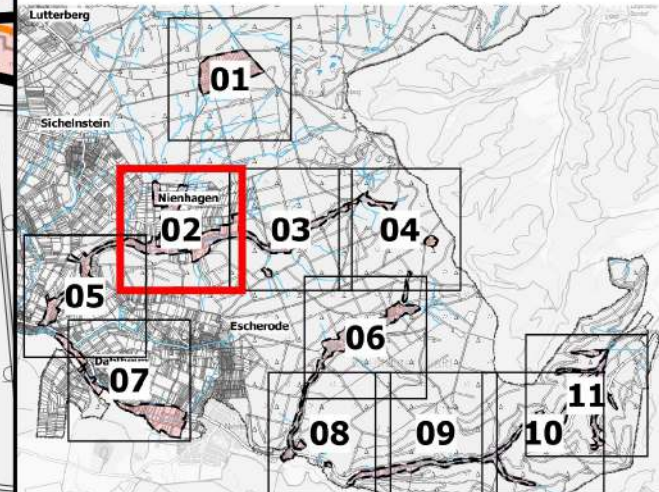
## Anlage 2

LANDKREIS GÖTTINGEN

### Detailkarte 02 zur Verordnung über das NSG "Bachtäler im Kaufunger Wald"

#### Legende

-  Grenze des Naturschutzgebiets
-  nachrichtliche Darstellung des LSG "Kaufunger Wald"
-  Landkreisgrenze
-  Gewässer II. u. III. Ordnung
-  stehendes Gewässer
-  Auenwälder gemäß § 3 Abs. 3 Nr. 6

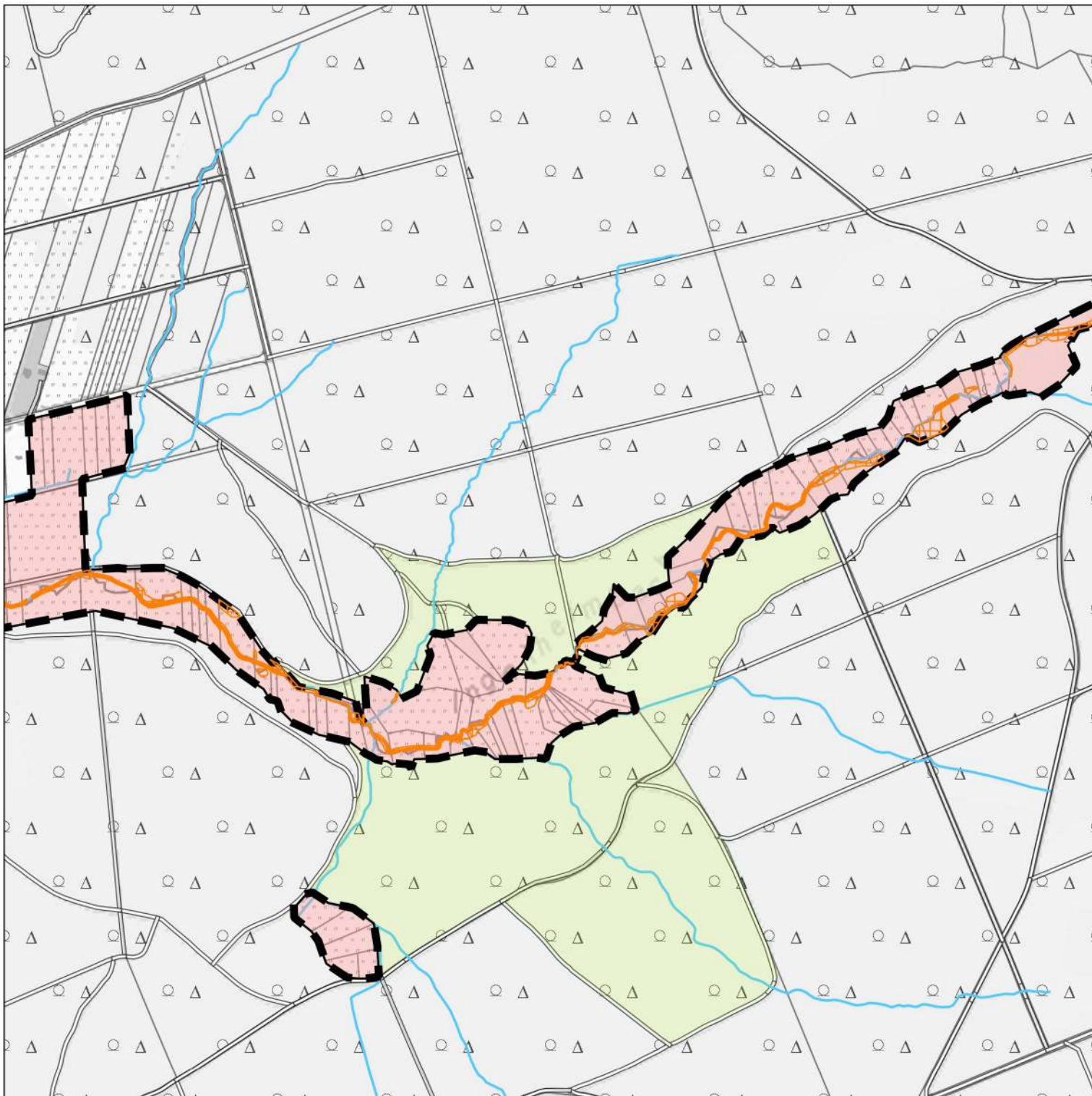


Maßstab 1:10.000  

Landkreis Göttingen  
Der Landrat

Göttingen, den 20.06.2018

Bernhard Reuter









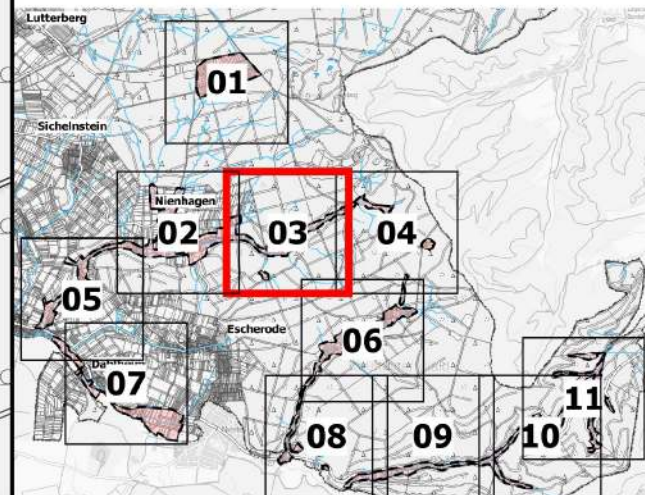
## Anlage 2

LANDKREIS GÖTTINGEN

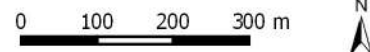
### Detailkarte 03 zur Verordnung über das NSG "Bachtäler im Kaufunger Wald"

#### Legende

-  Grenze des Naturschutzgebiets
-  nachrichtliche Darstellung des LSG "Kaufunger Wald"
-  Landkreisgrenze
-  Gewässer II. u. III. Ordnung
-  stehendes Gewässer
-  Auenwälder gemäß § 3 Abs. 3 Nr. 6



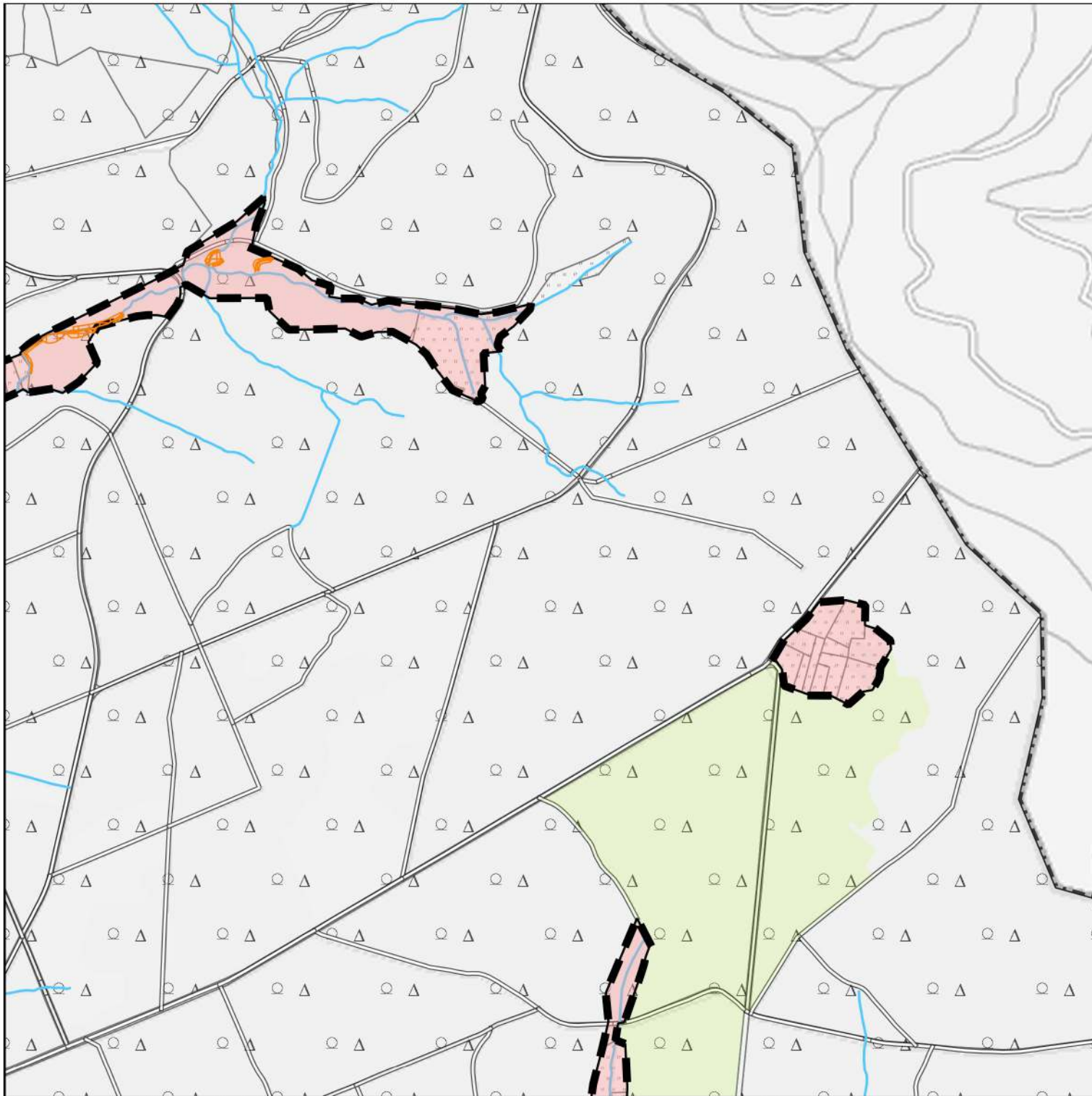
Maßstab 1:10.000



Landkreis Göttingen  
Der Landrat

Göttingen, den 20.06.2018

Bernhard Reuter






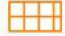


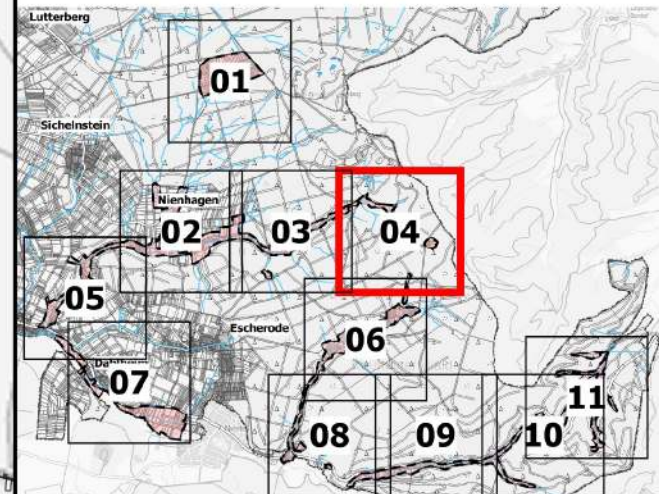
## Anlage 2

LANDKREIS GÖTTINGEN

### Detailkarte 04 zur Verordnung über das NSG "Bachtäler im Kaufunger Wald"

#### Legende

-  Grenze des Naturschutzgebiets
-  nachrichtliche Darstellung des LSG "Kaufunger Wald"
-  Landkreisgrenze
-  Gewässer II. u. III. Ordnung
-  stehendes Gewässer
-  Auenwälder gemäß § 3 Abs. 3 Nr. 6



Maßstab 1:10.000  0 100 200 300 m 

Landkreis Göttingen  
Der Landrat







Göttingen, den 20.06.2018

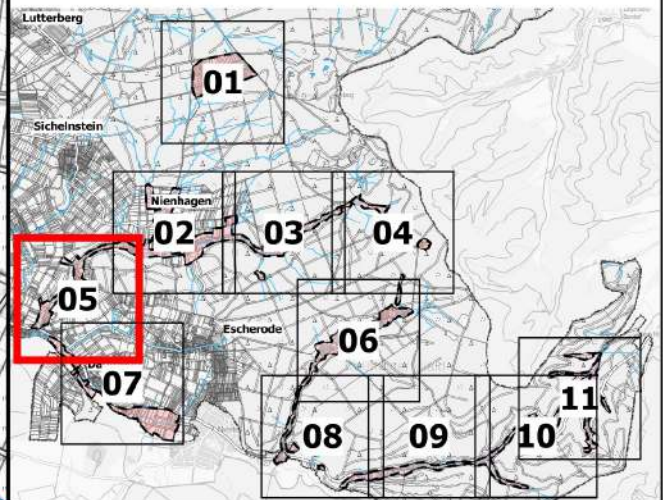
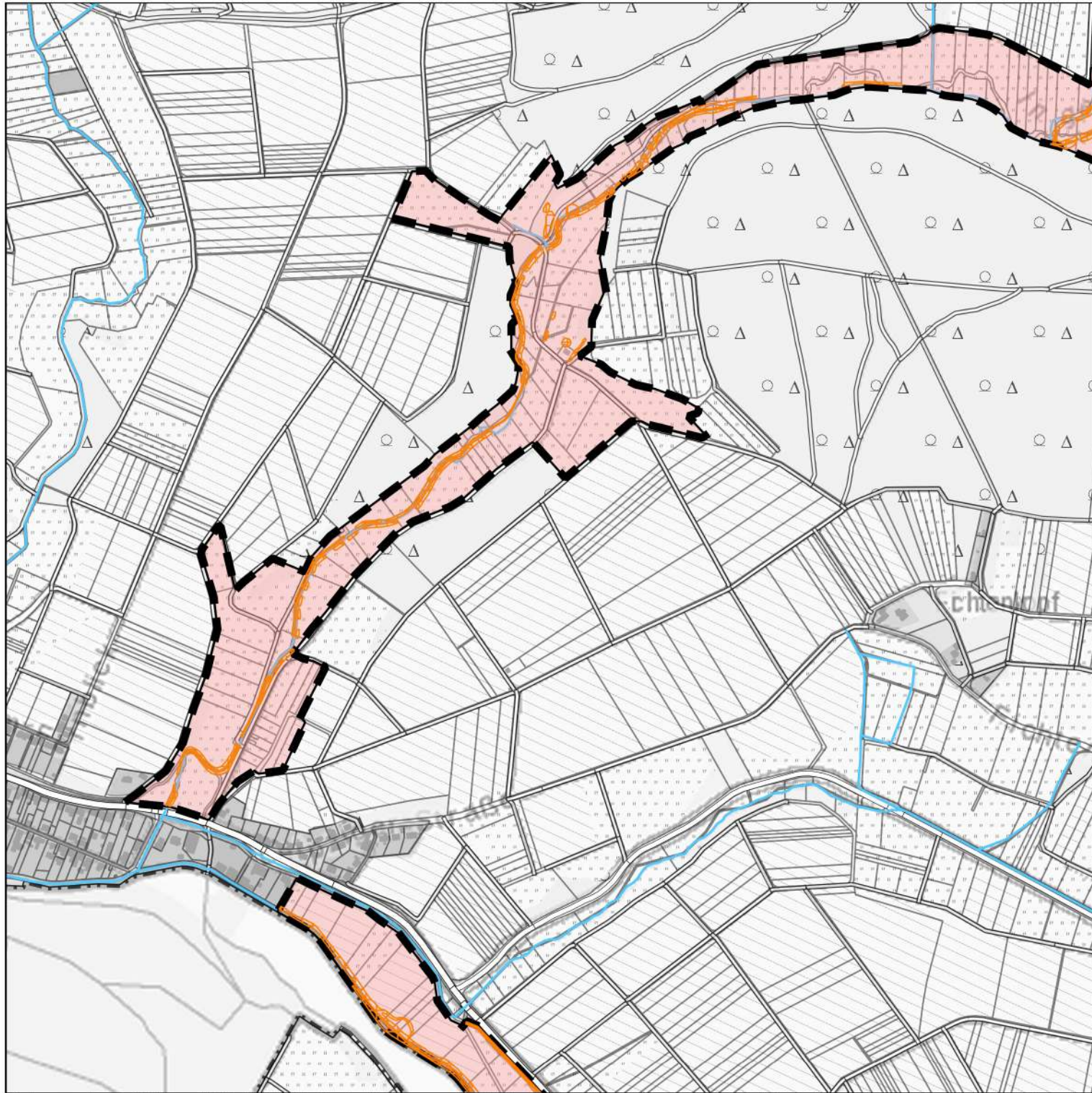
Bernhard Reuter

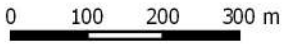

# Anlage 2

## Detailkarte 05 zur Verordnung über das NSG "Bachtäler im Kaufunger Wald"

### Legende

-  Grenze des Naturschutzgebiets
-  nachrichtliche Darstellung des LSG "Kaufunger Wald"
-  Landkreisgrenze
-  Gewässer II. u. III. Ordnung
-  stehendes Gewässer
-  Auenwälder gemäß § 3 Abs. 3 Nr. 6

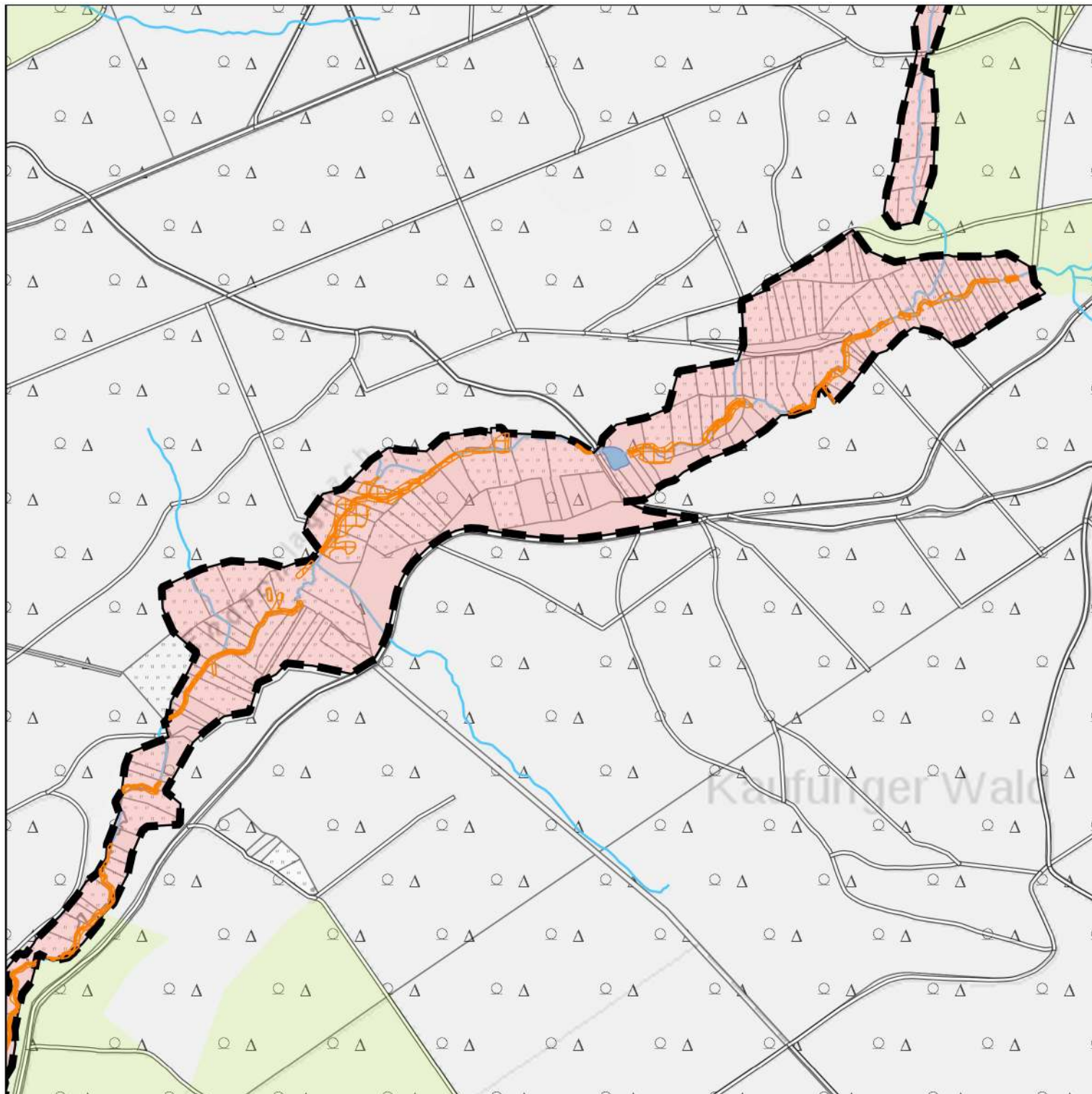


Maßstab 1:10.000  0 100 200 300 m 

Landkreis Göttingen  
Der Landrat

Göttingen, den 20.06.2018

Bernhard Reuter









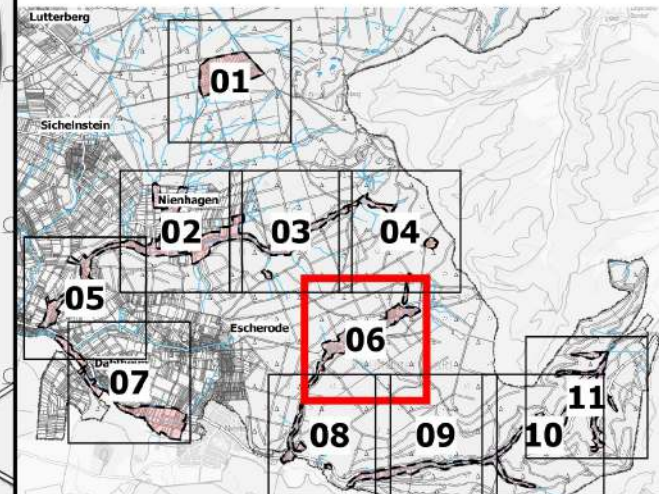
## Anlage 2

LANDKREIS GÖTTINGEN

### Detailkarte 06 zur Verordnung über das NSG "Bachtäler im Kaufunger Wald"

#### Legende

-  Grenze des Naturschutzgebiets
-  nachrichtliche Darstellung des LSG "Kaufunger Wald"
-  Landkreisgrenze
-  Gewässer II. u. III. Ordnung
-  stehendes Gewässer
-  Auenwälder gemäß § 3 Abs. 3 Nr. 6



Maßstab 1:10.000

0 100 200 300 m

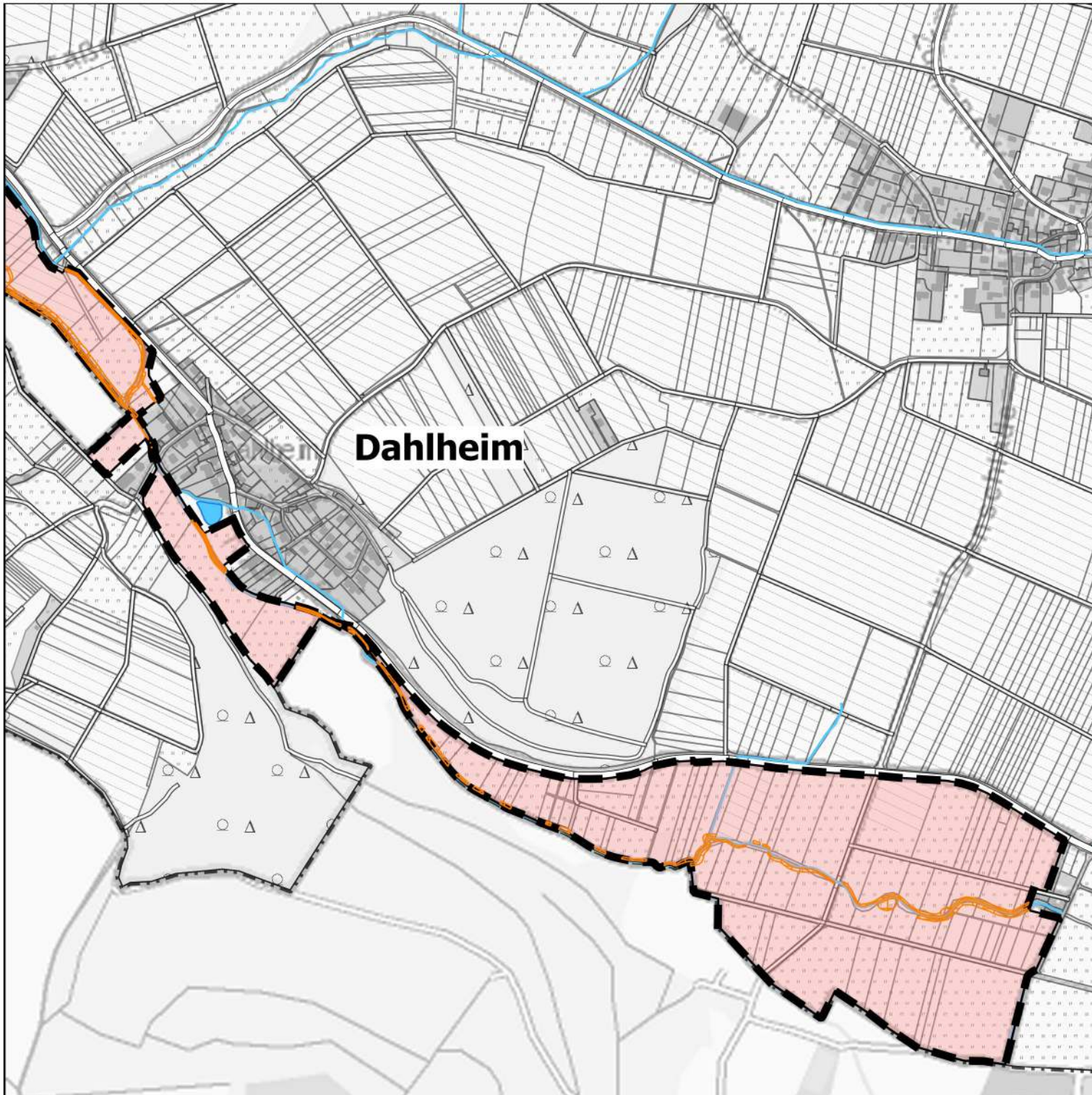


Landkreis Göttingen  
Der Landrat

Göttingen, den 20.06.2018

Bernhard Reuter











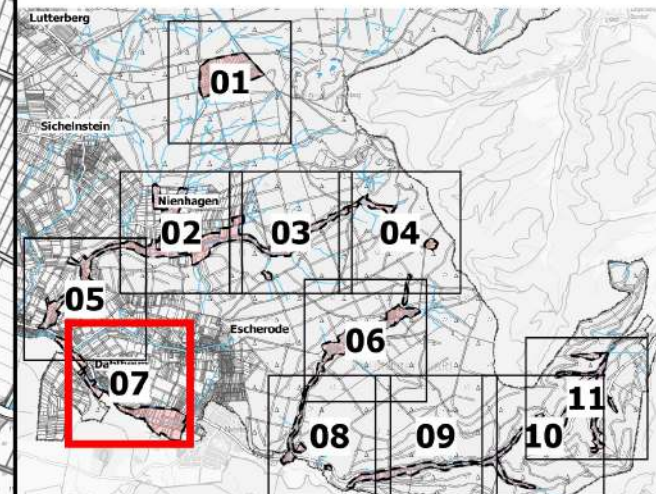
## Anlage 2

LANDKREIS GÖTTINGEN

### Detailkarte 07 zur Verordnung über das NSG "Bachtäler im Kaufunger Wald"

#### Legende

-  Grenze des Naturschutzgebiets
-  nachrichtliche Darstellung des LSG "Kaufunger Wald"
-  Landkreisgrenze
-  Gewässer II. u. III. Ordnung
-  stehendes Gewässer
-  Auenwälder gemäß § 3 Abs. 3 Nr. 6



Maßstab 1:10.000

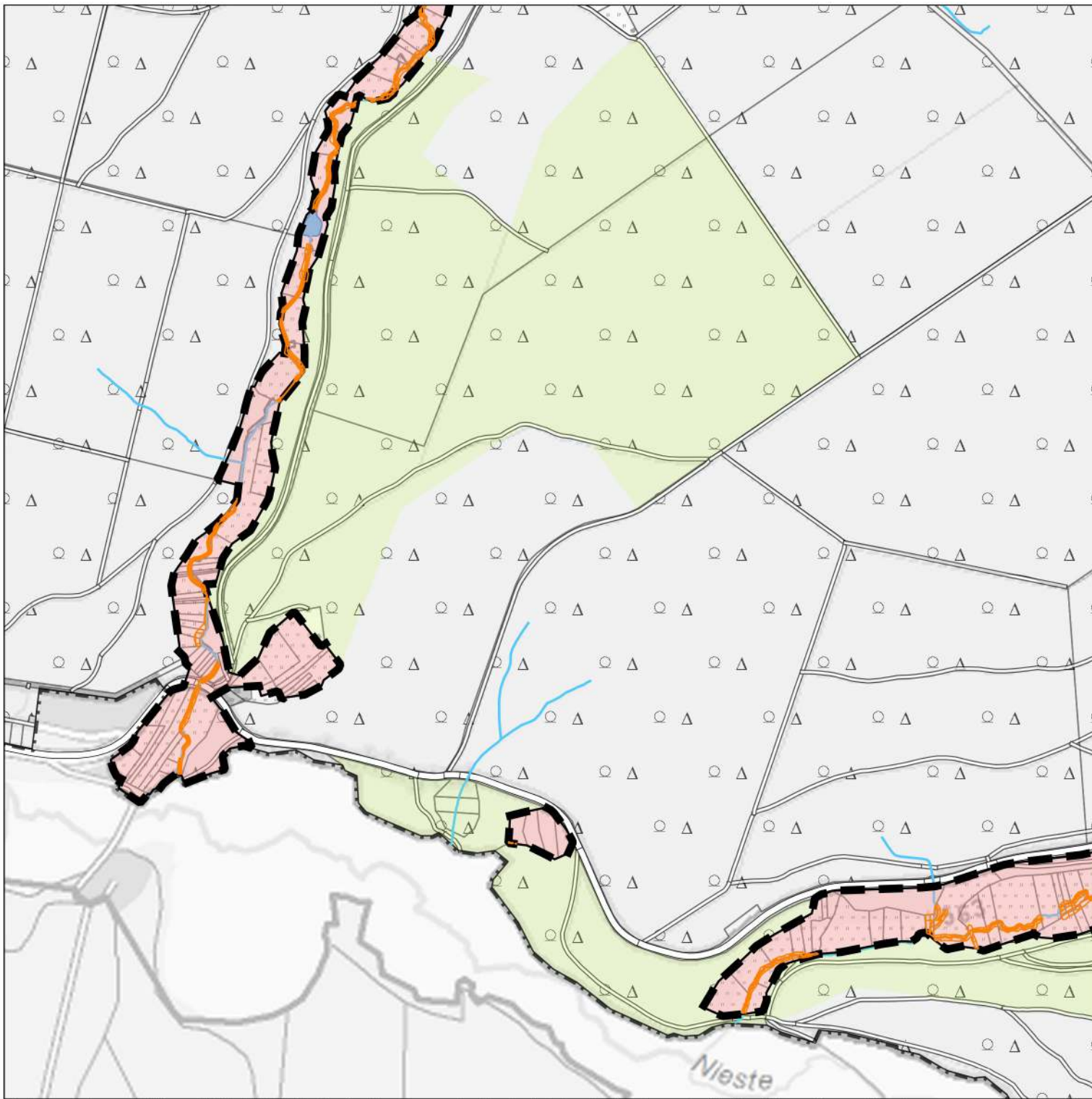
0 100 200 300 m



Landkreis Göttingen  
Der Landrat

Göttingen, den 20.06.2018

Bernhard Reuter









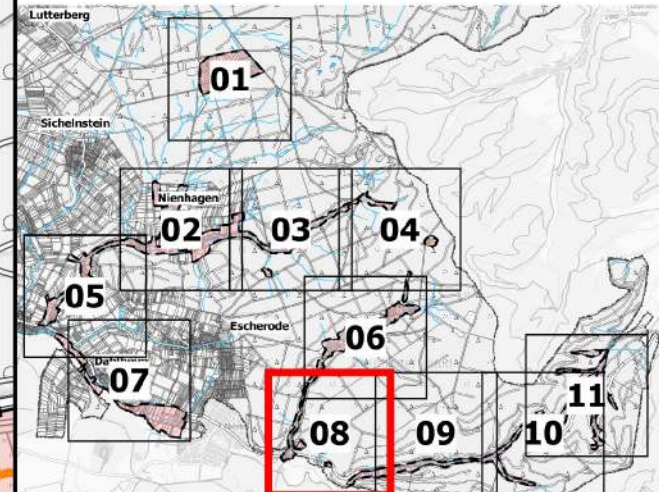
## Anlage 2

LANDKREIS GÖTTINGEN

### Detailkarte 08 zur Verordnung über das NSG "Bachtäler im Kaufunger Wald"

#### Legende

-  Grenze des Naturschutzgebiets
-  nachrichtliche Darstellung des LSG "Kaufunger Wald"
-  Landkreisgrenze
-  Gewässer II. u. III. Ordnung
-  stehendes Gewässer
-  Auenwälder gemäß § 3 Abs. 3 Nr. 6



Maßstab 1:10.000

0 100 200 300 m



Landkreis Göttingen  
Der Landrat







Göttingen, den 20.06.2018

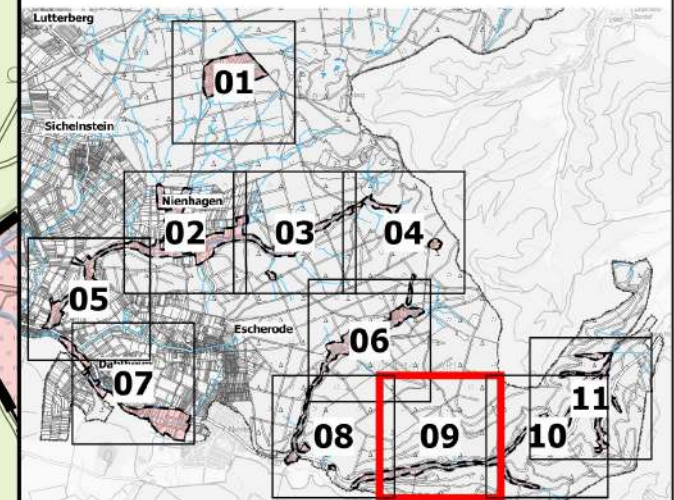
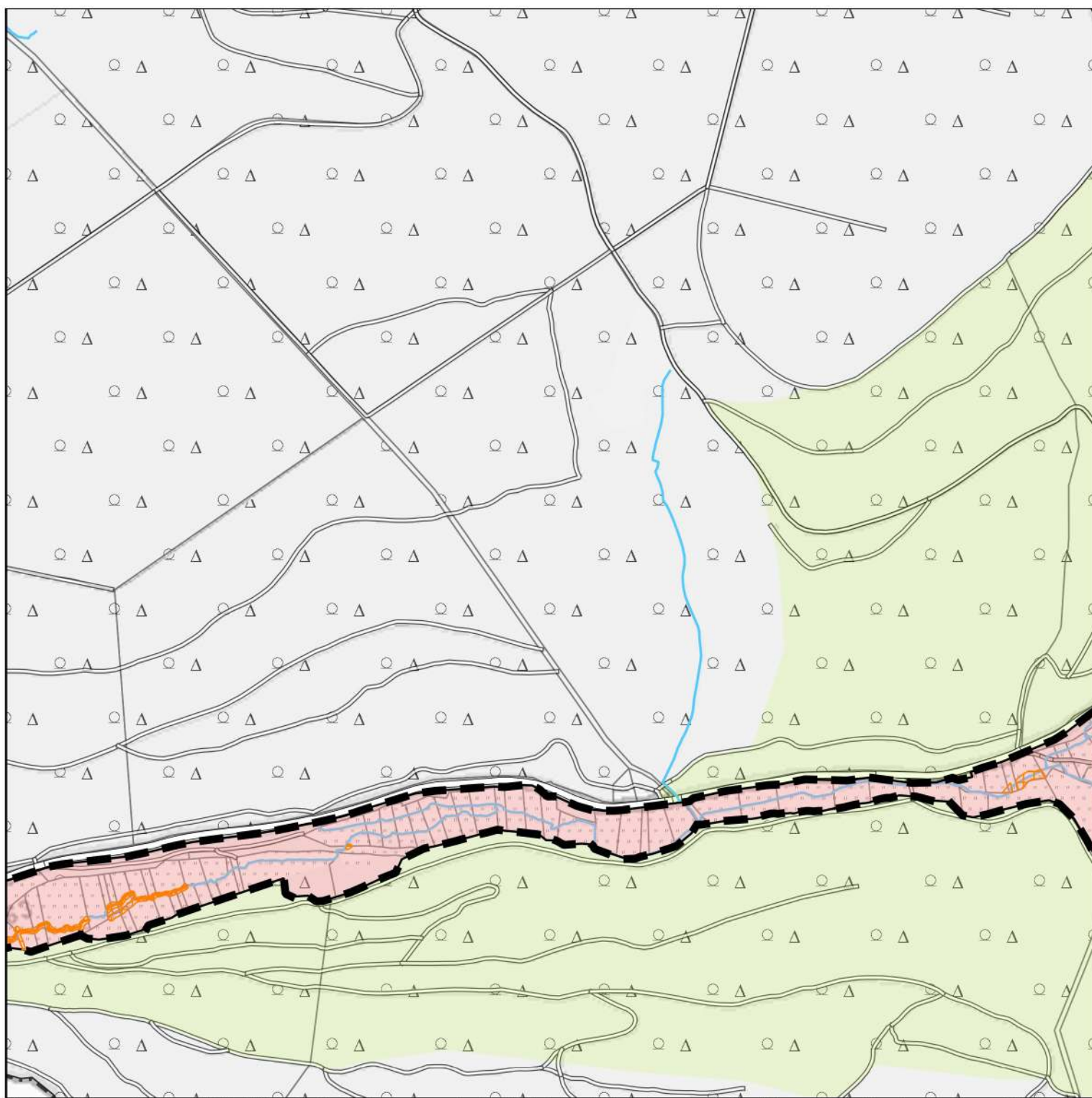
Bernhard Reuter

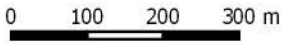

## Anlage 2

### Detailkarte 09 zur Verordnung über das NSG "Bachtäler im Kaufunger Wald"

#### Legende

-  Grenze des Naturschutzgebiets
-  nachrichtliche Darstellung des LSG "Kaufunger Wald"
-  Landkreisgrenze
-  Gewässer II. u. III. Ordnung
-  stehendes Gewässer
-  Auenwälder gemäß § 3 Abs. 3 Nr. 6

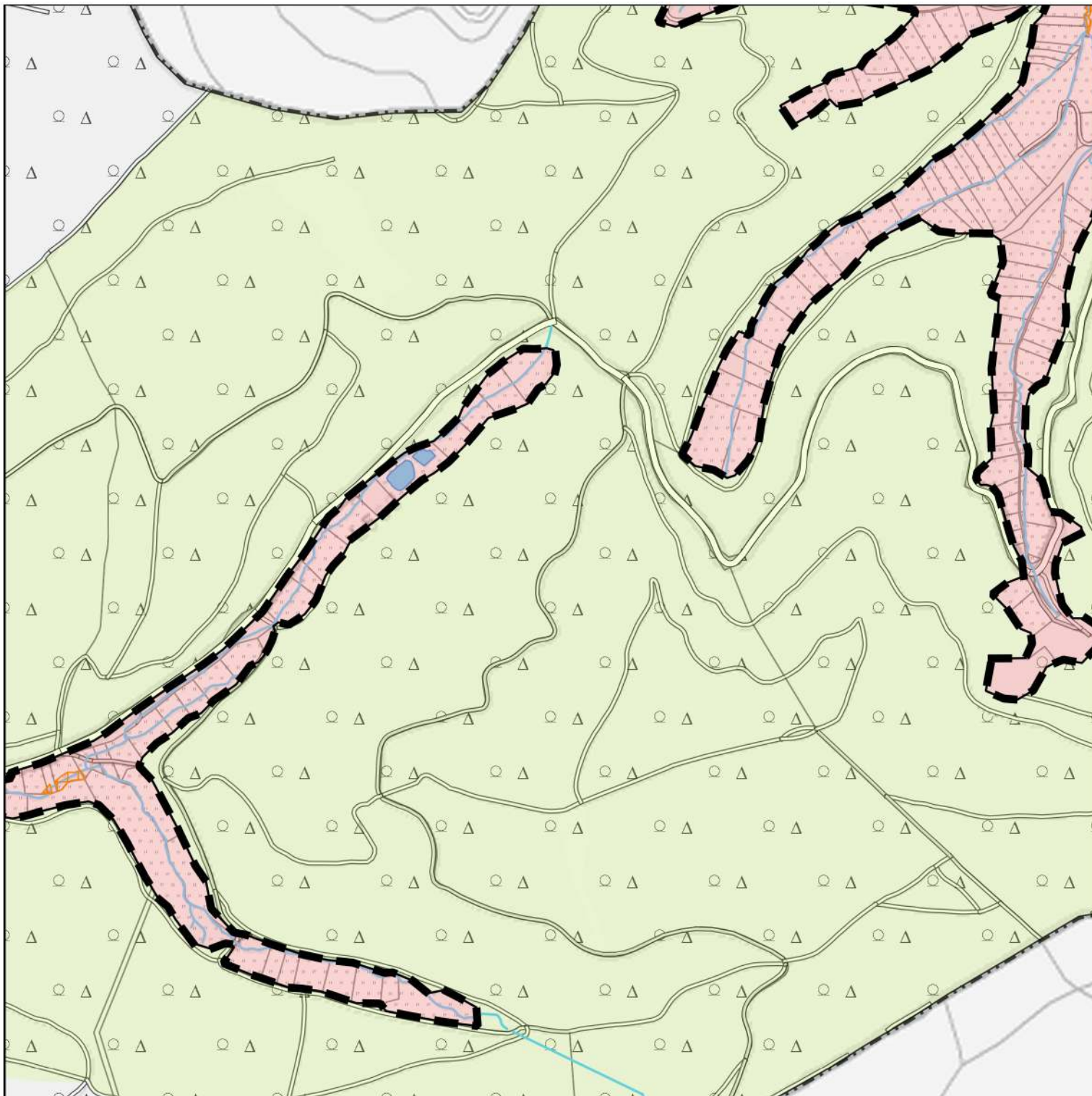


Maßstab 1:10.000  0 100 200 300 m 

Landkreis Göttingen  
Der Landrat

Göttingen, den 20.06.2018

Bernhard Reuter









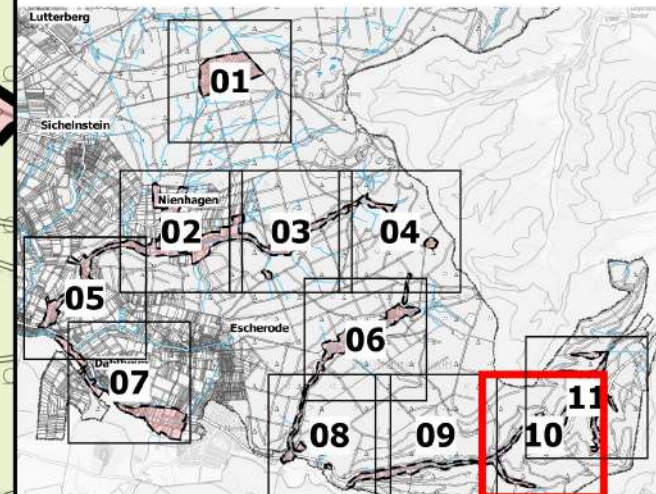
## Anlage 2

LANDKREIS GÖTTINGEN

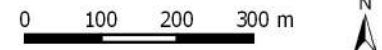
### Detailkarte 10 zur Verordnung über das NSG "Bachtäler im Kaufunger Wald"

#### Legende

-  Grenze des Naturschutzgebiets
-  nachrichtliche Darstellung des LSG "Kaufunger Wald"
-  Landkreisgrenze
-  Gewässer II. u. III. Ordnung
-  stehendes Gewässer
-  Auenwälder gemäß § 3 Abs. 3 Nr. 6



Maßstab 1:10.000








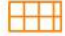
Landkreis Göttingen  
Der Landrat

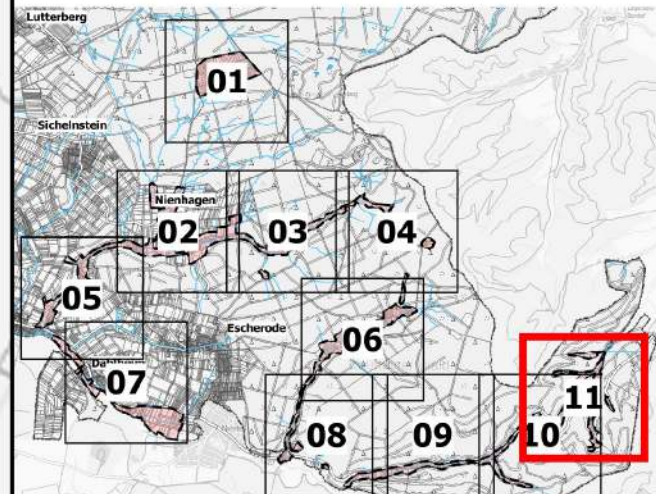
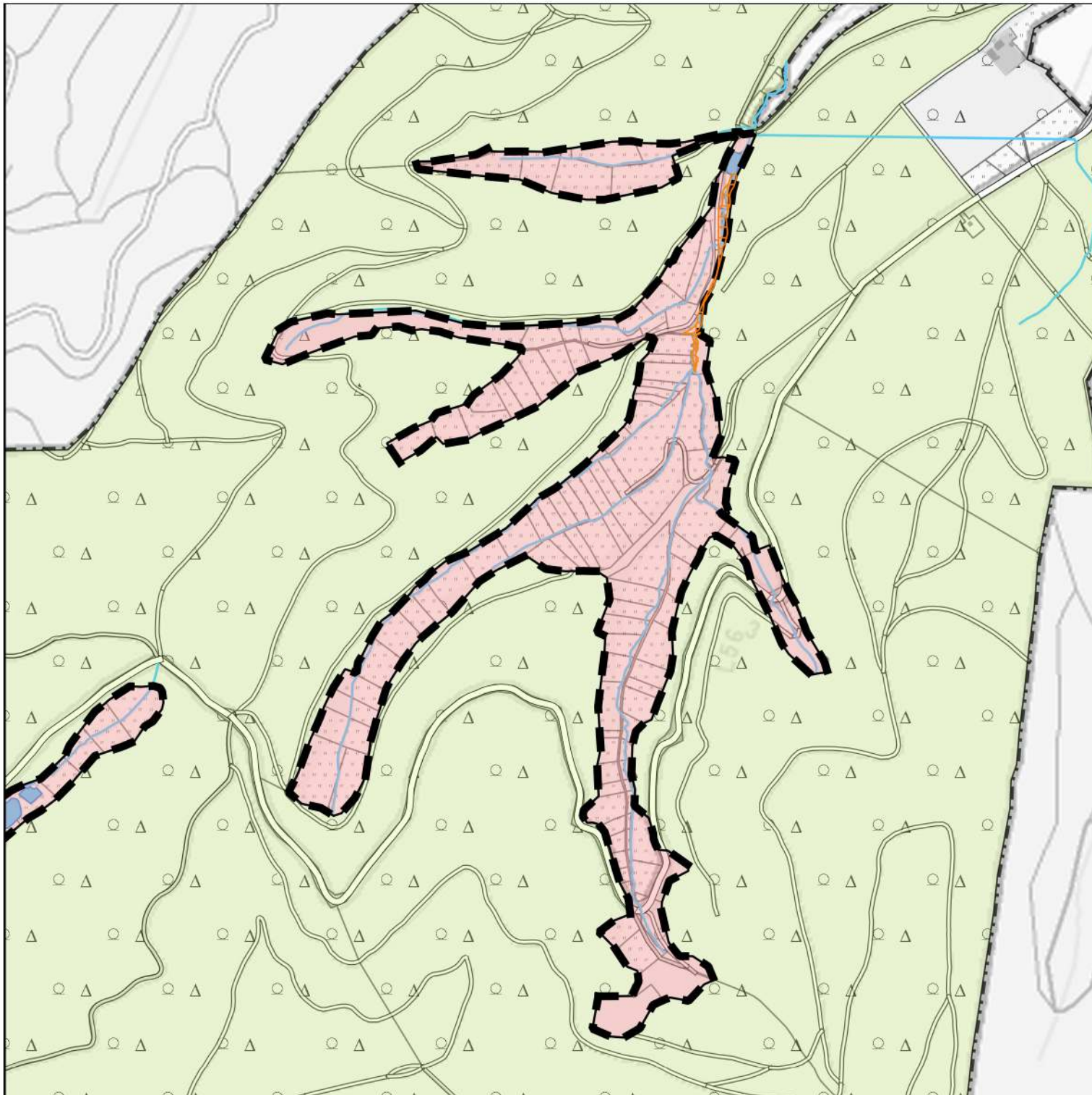
Göttingen, den 20.06.2018

Bernhard Reuter

**Detailkarte 11  
zur Verordnung über das  
NSG "Bachtäler im Kaufunger Wald"**

**Legende**

-  Grenze des Naturschutzgebiets
-  nachrichtliche Darstellung des LSG "Kaufunger Wald"
-  Landkreisgrenze
-  Gewässer II. u. III. Ordnung
-  stehendes Gewässer
-  Auenwälder gemäß § 3 Abs. 3 Nr. 6



Maßstab 1:10.000  N

Landkreis Göttingen  
Der Landrat

Göttingen, den 20.06.2018

Bernhard Reuter